

6551 TSUNAGU SOLUTIONS

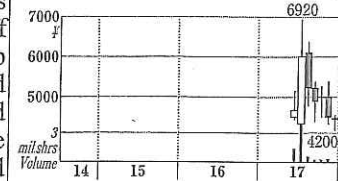
ツナグ・ソリューションズ

Engaged in the planning and operation of job information media, and the staffing services focused on recruiting agency services of temporary workers and part-timers, as well as the operation of convenience stores and their staff training. In recruiting agency services, its mainstay, offers not only one-stop services encompassing selection of media, production of advertising copies, and responses to applicants, but also supports for employment of new graduates and mid-career workers. Established by the current president and others who were formerly of a Recruit's group company in 2007 as a consulting firm specialized in temporary workers and part-timers in Ginza, Tokyo. Opened branch offices in the Tohoku, Tokai and Kansai regions to expand business nationwide.

Head Office 1-1-3, Yurakucho, Chiyoda-ku, Tokyo 100-0006

Tel: 050-3816-5566

TYOQD PER 107.6 ~ 66.3



Stocks (Round lot, 100 shares)

Exchanges: TYOQD

Prices High Low

'17 6920 (Jul) 4200 (Dec)

Finance (1000 shares)

Jan '14 3rd 0.0075 (¥2000) 57

Mar '15 3rd 0.0115 (¥10000) 69

Mar '17 Split 1->30 2,070

Jun '17 Pub 0.27 (¥2130) 2,340

Jul '17 3rd(OA) 0.0675 (¥1674) 2,415

Shares Issued (Oct 31 '17 1000 shares)

2,424

Market Cap (¥mil) 10,762

No. of Shareholders (Sep'17) 911

Major Holders (%) Foreign Owners (3.9)

Mitsuhiro Yoneda (25.6), Employees'

Stockholding (16.6), Yoneda Jimusho

(11.7), Japan Trustee Services, T. (4.9),

Eisuke Watanabe (4.9), Recruit Holdings

(2.5), BNY GCM Client JPRDISGFEAC

(2.4), Junya Mikoshiba (2.1), Takaharu

Yano (2.1), Atsunori Hiraga (1.9)

Income (¥mil)	Sales	Op.P	Ord.P	Net.P	EPS(¥)	DPS(¥)	Dividend (¥)
□ 15. 9	3,127	73	63	14	226.8	0	15. 9 0
□ 16. 9	5,087	230	224	107	1,558.2	0	16. 9 0
□ 17. 9	6,976	302	280	138	64.3	0	17. 9 0
□ 18. 9	7,500	390	350	200	82.5	0	18. 9 0
□ 19. 9	8,000	500	480	270	111.4	0~15	Div. yield -%
□ 17. 3	3,409	186	181	86	42.0	0	BPS (¥) □ Sep'17 507.0 (6,137)
□ 18. 3	3,600	95	90	35	14.4	0	

Est: Feb 2007 List: Jun 2017

Chairman: -

President: Mitsuhiro Yoneda

Employees(age/income) □ Sep'17 297/ 190 (31.9/ 4.15 ¥mil)

Consolidated Sales(%) Sep'17

Human resource services 69

Media services 19

Retail services 12

Underwriters: © Nomura ©

Daiwa, Nikko, Monex, SBI,

Ichiyoshi, Ace, Iwai Cosmo

References: Resona, Mizuho,

SMBC, BOTMU

Finan. Data (¥mil) □ Sep'17

Total Assets 2,641

Shareholders' Equity (%) 1,228 (46.5)

Capital Stocks 513

Ret. Earnings 381

Borrowings 601

Cash Flows (¥mil) □ Sep'17

CF(Operating) 249 (348)

CF(Investing) -155 (-108)

CF(Financing) 373 (-89)

Cash Equivalents 1,016 (549)

Indices (¥mil) □ Sep'17

ROE(%) 11.3

ROA(%) 5.2

Capital Spending 132

Depn & Amortn 83

R&D Expenditure 0

Highest Net Profit □ Sep'17 138

□ Sep'16

□ Sep'16

□ Sep'16

□ Sep'16

□ Sep'16

□ Sep'16

□ Sep'16

□ Sep'16

□ Sep'16

□ Sep'16

□ Sep'16

□ Sep'16