

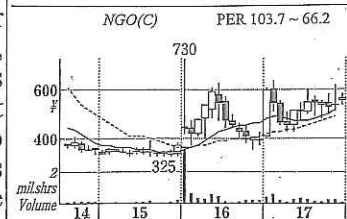
3808 OKWave

オウケイウェイヴ

Operates "OKWave," a Q&A website that enables users to ask and answer questions online. Engaged in the portal site business for corporations, supplying question and answer contents, and the solutions business selling FAQ software to companies and local governments. Contract fees and advertising revenues are the main sources of earnings. Also operates a paid site providing lifestyle-related information on celebrities and others. Acquired a multilingual call center operator accessible 24/7 in 2012, and pursuing internationalization of its Q&A site. Major shareholders include Rakuten, Inc. and Microsoft Corp. of the US.

Head Office 1-19-15, Ebisu, Shibuya-ku, Tokyo 150-0013

Tel: 03-5793-1191



Stocks (Round lot, 100 shares)

Exchanges: NGO(C)

Prices	High	Low
~ '13	219900 ('12)	355 ('13)
'14	617 (Jan)	337 (Dec)
'15	388 (Aug)	325 (Oct)
'16	730 (Jan)	358 (Nov)
# '17	639 (Feb)	399 (Jan)

Finance (1000 shares)

Dec '02	3rd 0.0007 (¥200000)	4
Mar '06	Split 1->10	48
Jun '06	Pub 0.0061 (¥155000)	70
Oct '07	3rd 0.0045 (¥64260)	76
Apr '08	3rd 0.009 (¥28903)	85
Jul '12	Split 1->100	8,598

Shares Issued (Oct 31 '17 1000 shares)

Market Cap (¥mil) 8,732

No. of Shareholders (Jun'17) 4,907

Major Holders (%) Foreign Owners (10.4)

Kaneto Kanemoto (24.2), Rakuten, Inc. (18.2), Microsoft Corp. (10.3), Impress Holdings (4.9), Naoki Yoshikawa (4.5), Michio Fukuda (2.6), VCN Co. (2.3), Chikara Sano (1.8), Hiroyuki Oikawa (1.7), Hajime Sugiura (1.7)

Income (¥mil)	Sales	Ope.P	Ord.P	Net.P	EPS(¥)	DPS(¥)	Dividend (¥)
□ 14. 6	3,241	-349	-344	-410	-47.5	0	12. 6 250
□ 15. 6	2,737	13	47	21	2.5	0	13. 6 0
□ 16. 6	2,410	155	141	73	8.4	0	14. 6 0
□ 17. 6	2,411	167	182	123	14.2	0	15. 6 0
□ 18. 6	2,600	170	150	120	13.7	0	16. 6 0
□ 19. 6	2,780	200	180	140	16.0	0	17. 6 0
□ 16.12	1,161	15	42	37	4.3	0	18. 6 0
□ 17.12	1,140	50	45	25	2.9	0	Div. yield -%
□ 16. 7-9	575	-3	-6	-8	-0.9	0	BPS (¥) □ Sep'17
□ 17. 7-9	557	33	24	18	2.1	0	171.6 (169.5)

Est: Feb 2000 List: Jun 2006
 Chairman: -
 President: Kaneto Kanemoto
 Employees (age/income) □ Jun'17
 143/ 114 (35.7/ 5.86 ¥mil)
 Consolidated Sales (%) Jun'17
 Social media 19
 Enterprise solutions 54
 Multilingual CRM 27

Underwriters: © SBI © Nomura, H.S., Mizuho, Tokai Tokyo, Rakuten, Mitsubishi UFJ Morgan Stanley, Monex, YAMA-GEN, i-NET, Matsui
 References: BOTMU, SMBC
 Finan. Data (¥mil) □ Sep'17
 Total Assets 1,854
 Shareholders' Equity (%)
 1,498 (80.8)
 Capital Stocks 984
 Ret. Earnings -420
 Borrowings 21

Cash Flows (¥mil) □ Jun'17 □ Jun'16
 CF(Operating) 152 (239)
 CF(Investing) -212 (-225)
 CF(Financing) -5 (-1)
 Cash Equivalents 799 (874)
 Indices (¥mil) □ Jun'17 □ Jun'18
 ROE(%) 8.7 8.0
 ROA(%) 6.6 6.5
 Capital Spending 110 ..
 Depn & Amortn 81 ..
 R&D Expenditure 91 ..
 Highest Net Profit □ Jun'17 123